



Away
Resorts



In partnership with leading UK
Holiday Home Manufacturer



introducing the
TriBeCa

A little bit **About Us**

Founded in 2008 by Carl Castledine, the third generation in his family to run a holiday park, Away Resorts prides itself on having parks that make the most of their unique and beautiful surroundings and each has their own individual appeal. With 6 parks situated across Lincolnshire, Isle of Wight, North Wales, Hayling Island, New Forest & Essex, every Away Resorts park is jam-packed with fantastic activities and great entertainment to keep every member of the family grinning from ear to ear.

From animal encounters to axe throwing, woodland walks to waterside bars, there's always something new to try and with camping and touring, caravans and lodges, glamping and vintage accommodation there are plenty of ways to stay.

BARMOUTH BAY

Gwynedd, Wales

One of the UK's longest beaches lies in front of you and the eye-popping mountains of Snowdonia behind you. Barmouth Bay is tranquil and peaceful but boasts some great outdoor pursuits too. ***Barmouth offers lodges and caravans***





SANDY BALLS

New Forest, Hampshire

Set in the beautiful New Forest National Park, our newest park has welcomed hundreds of thousands of guests since opening its doors nearly 100 years ago. Not to mention a variety of fantastic on-park facilities and beautiful spots for you and the family to truly unwind.

Offers lodges, caravans and touring & camping

TATTERSHALL LAKES

Tattershall, Lincolnshire

With Lincolnshire's rolling green parkland and eight sparkling lakes on your doorstep, Tattershall Lakes is a gateway to exploration and relaxation in equal measure - watersports, fishing, rambling & more.

Offers lodges, caravans, Canvas Village, touring & camping & TriBeCa

MERSEA ISLAND

Mersea Island, Essex

Situated on the stunning Mersea Island, our secluded holiday park is brilliantly designed to help you unwind from the stress of daily life and open you up to the benefits of owning your own holiday home.

Offers caravans & lodges

MILL RYTHER

Hayling Island, Hampshire

Settle into island life at Mill Rythe on Hayling Island, just a short hop from the stunning Hampshire coast. You'll find the park chock full of adult exclusive and family fun as well as sparkling night-time entertainment. ****Currently holiday home ownership is not available at Mill Rythe.***

Offers, rooms, suites and caravans

WHITECLIFF BAY

Bembridge, Isle of Wight

Set above the sands of the Isle of Wight, Whitecliff Bay is the perfect base to explore this spectacular island with its own charming atmosphere. ***Offers lodges, caravans, chalets, Canvas Village, touring & camping and TriBeCa***

Offers lodges, caravans, chalets, Canvas Village, touring & camping and TriBeCa





The Caravan REINVENTED

Affordable UK holiday accommodation has definitely had a revamp in recent years. First of all we had the Glamping revolution, to bring camping right up to date. Tents were completely made over. And then along came yurts, teepees and wigwams - all edging their way into campsites. The bar had been raised on UK accommodation, and this extended to B&Bs too, with tree-houses, boathouses and lighthouses becoming popular. **All the time the humble caravan said nothing...until now.**

Away Resorts has worked closely with leading holiday home manufacturer ABI to design accommodation like no other. Designed on feedback from families and with a woman's touch it aims to appeal to a stylish generation of holiday makers and owners looking for a little bit of contemporary luxury.

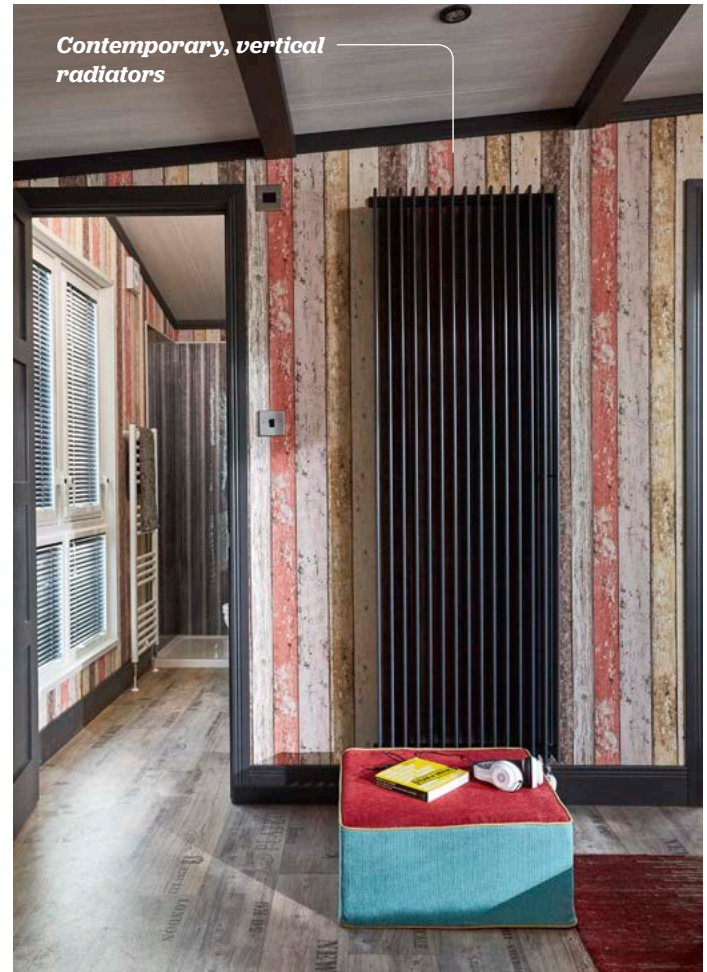
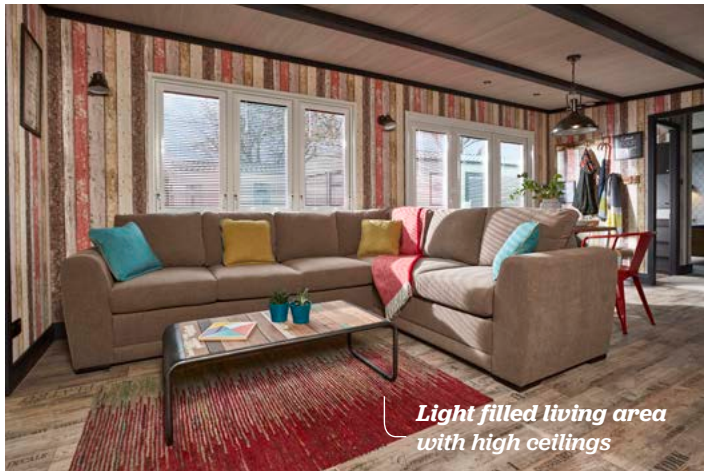


55" TV with sound-bar

Living

Designed especially for families, mums and dads will love the central, light-filled, open-plan living space and kitchen. With its high roof-line, free standing furniture, New York loft style décor and panoramic glass bi-fold doors creating a nature-on-the-inside vibe, this could be an uber-trendy apartment in Berlin. The sophisticated design treatment uses art, colour and texture to create a boutique hotel feel, and makes the very most of every inch of space.







*Free standing
bathtub*



*King-size bed
with luxury bedding*

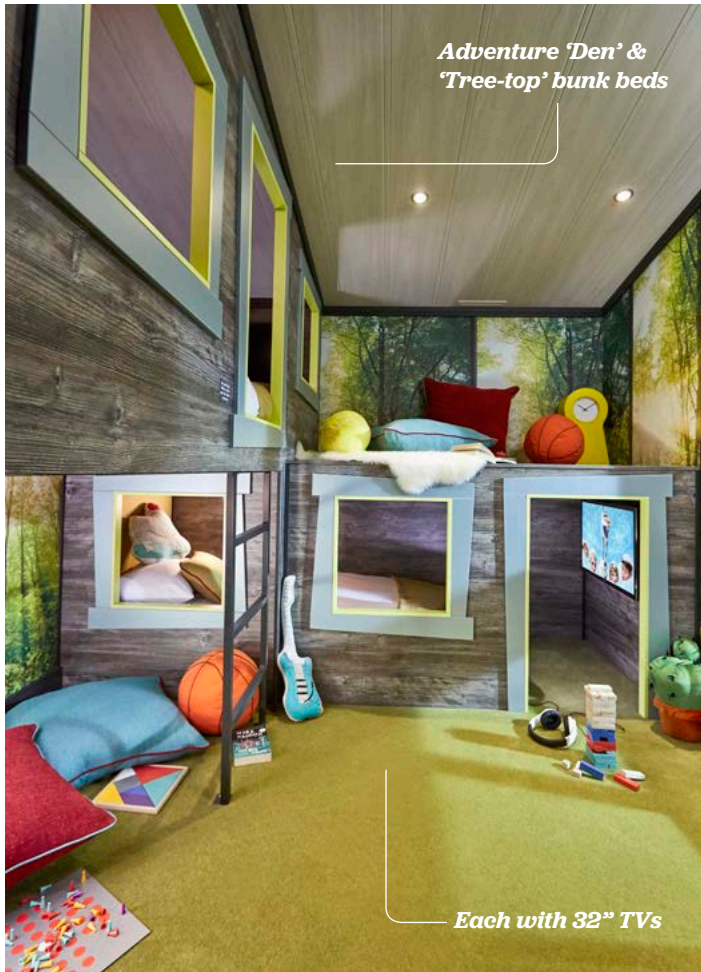
The TriBeCa's design is about form and function. Designed by women, the team have considered all the little details that will make your holiday more enjoyable. The plug-points are all in sensible places, near to the mirror, to make drying hair and getting ready easy. There is plenty of storage space in free-standing wardrobes - and room to hang up long dresses and trousers.



Master Bedroom

The master bedroom features a free standing bathtub, and an en-suite. Magically, there is a hidden TV behind the mirror so you can lie back in the bath and watch a show. When you are finished, the TV transforms back into a mirror. There is also a second 40 inch TV screen, viewable from the king-size bed, complete with luxury bedding making it an idyllic holiday sanctuary. The large windows let light stream into the room for a fresh and bright atmosphere.





*Adventure Den' &
Tree-top' bunk beds*

Each with 32" TVs



Kids Room

The ultra cool kids room would be ground-breaking in a designer hotel, let alone a caravan. The timber-effect walls and huge windows create a light, forest-like feel and the astro-turf inspired flooring carries on the theme of bringing the outside in. Kids will love the fact that the bunk-beds come complete with dens and each bed has its own TV screen and sockets for movies and gaming, everything that a home away from home needs to keep them entertained.



Along with the free standing bath tub, the master bedroom features a beautiful en-suite with calming dark wood furniture and swanky New York warehouse style flooring for a modern but rustic feel.

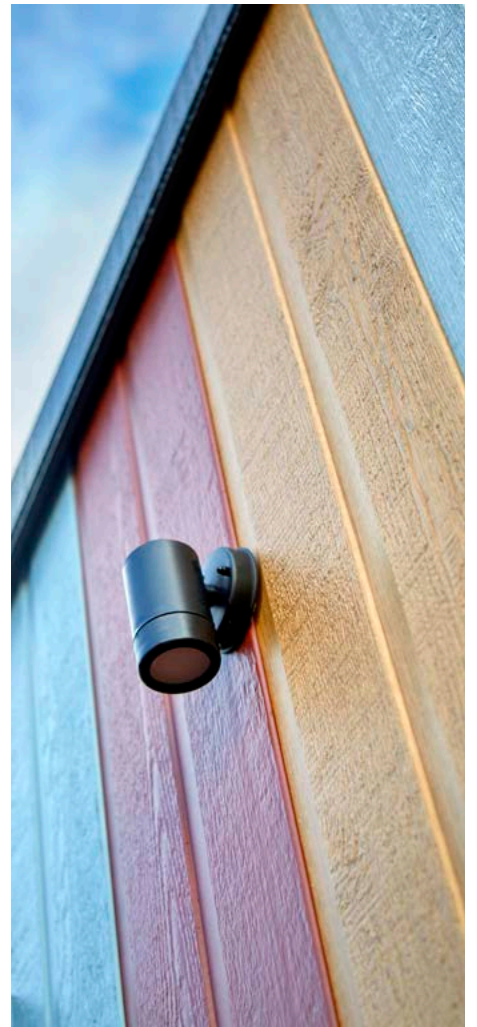
The main bathroom is spacious with a large shower, plenty of storage space for all the necessities and a warm, textured colour scheme





Strike a pose

Perhaps the most noticeable change is the exterior design - while many traditional caravans come in any colour you want, as long as its beige, this new caravan is clad with striking, colourful stripes and also comes complete with it's very own outdoor seating area. For those looking for an extra little bit of relaxation and luxury, hot tubs are available to purchase at an extra cost.



Have it
Your way..



Impact Stripe

Woodland Green



Available in three colour options, the TriBeCa fits in with any surrounding whilst still keeping its striking image.

Coastal Blue





Alternative Layout

The TriBeCa is available in an alternative layout. The master bedroom features a sun basked seating area thanks to its beautiful panoramic sliding doors, the perfect place to take in the views.


If the forest-style bedroom isn't what you're looking for then you can opt for the more traditional twin bedroom layout for adult guests.



To find out more visit:
awayresorts.com/tribeca

Or call:
01442 50 88 50

Away Resorts Ltd
IMEX Building
575 - 599 Maxted Road
Hemel Hempstead
Herts
HP2 7DX

 [/awayresortsholidays](#)

 [awayresortsholidays](#)



For more info about ABI visit:
abiuk.co.uk

 [/ABIHolidayHomes](#)

 [ABIHolidayHomes](#)



**Tattershall Lakes
Country Park**
Sleaford Road
Tattershall
Lincolnshire
LN4 4LR

**Mersea Island
Holiday Park**
Fen Lane
Colchester
Essex
CO5 8UA

**Whitecliff Bay
Holiday Park**
Hillway Road
Bembridge
Isle of Wight
PO35 5PL

**Sandy Balls
Holiday Village**
Godshill
Fordingbridge
Hampshire
SP6 2JZ

**Barmouth Bay
Holiday Park**
Tal-Y-Bont
Gwynedd
Wales
LL43 2BJ

**Mill Rythe
Holiday Village**
16 havant road
hayling island
hampshire
PO11 0PB